

Pioneering a new era in POCUS.

The Kosmos Platform is a family of hardware, software, and advanced AI solutions designed to support every aspect of your point-of-care ultrasound needs.

Top Tier Imaging - Kosmos imaging is benchmarked against advanced cart-based systems and delivers clinical clarity at the bedside. It is the only ultraportable device providing advanced feature sets such as PW & CW Doppler with TDI.

Kosmos AI Solutions - Kosmos is enabled with extensive AI capabilities to help provide a more complete diagnosis at the bedside. It supports novice and advanced users with real-time probe positioning guidance, image grading, and auto-labeling while also providing automatic calculations ranging from a simple ejection fraction to complete complex systolic and diastolic function analysis and assessment of valve disease.

Kosmos Software Solutions- Kosmos provides workflow solution software and strategic partnerships. The Us2.ai software solution offers advanced echo workflows. 19Labs software provides advanced tele-ultrasound with Kosmos and all of the additional tele-health connections that 19Labs offers. Kosmos Universal Platform is our own vendor agnostic, HIPAA-compliant online ultrasound workflow solution to streamline the point-of-care ultrasound user workflow.

Three Probes - Your Choice



Torso-One™ Phased Array Probe

Provides high-definition ultrasound imaging with a small footprint and narrower grip for access in tight anatomical spaces, typically when imaging between ribs. Ideal for cardiac, lung, and abdominal exam types.

Lexsa™ Linear Array Probe

A 38mm aperture for superficial anatomy, vascular, MSK and lung applications. Lexsa offers compound imaging capabilities for greater image clarity and better visualization of the needle for procedural guidance.

Torso Phased Array Probe

Truly see and hear your patients for the first time. Torso is a phased array transducer that provides exceptional image quality and real-time synchronization of three signals — digital auscultation, ECG, and ultrasound — all in one, easy-to-use handheld ultrasound system. Exam types include heart, lung, and abdomen.

Device Compatibility

Compatible with select Apple iOS iPads, Android tablets and Kosmos proprietary Bridge platform

Durable

Survives 1 m drop, IP67 rated, and validated to cleaning, intermediate, and high-level disinfection

5 Made in USA | 5-year warranty

Made with excellence in Redmond, WA, USA with Industry leading 5-year warranty

Built for real-life patient situations

Patients inevitably come in all shapes and sizes, presenting with various pathologies. Kosmos was built with this in mind and tested to ensure high-confidence imaging on the most challenging patients. The proof is in the images.

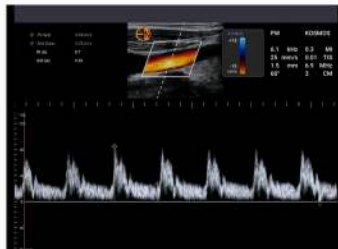
Kosmos Advanced features



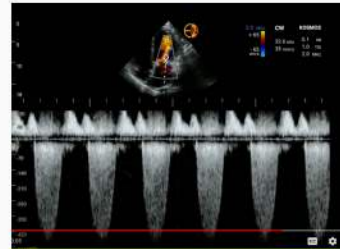
Top Tier Imaging - Cardiac



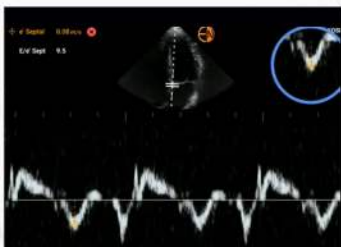
Top Tier Imaging - Abdominal



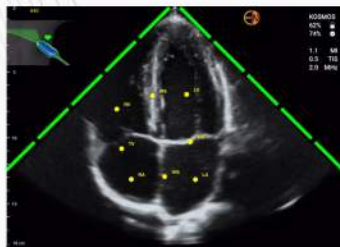
PW Doppler



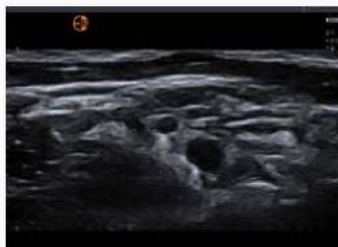
CW Doppler



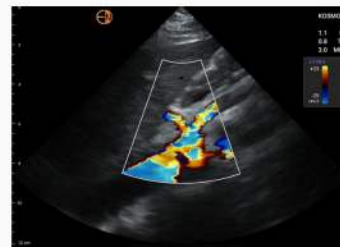
Tissue Doppler Imaging



Kosmos AI - Trio



Superficial Imaging



Color Doppler Imaging

Introducing Kosmos Plus!

Kosmos Plus unleashes advanced POCUS capabilities at a fraction of the cost. With everything included — cutting-edge AI, advanced Doppler features, transducers, a 12.9-inch iPad Pro® and medical-grade stand — you'll have what you need to get started out of the box and ensure your equipment stays together when you need it. Enhance patient care, optimize your workflow, and elevate your clinical information.

Here's what's included

- AI Features: Trio, AI FAST, AI-assisted EF workflow
- Doppler Features: Color Doppler, PW, TDI, along with CW Spectral Doppler capabilities
- Flexible probe configurations with Lexsa, Torso-One or both
- 12.9in Apple iPad Pro
- Kosmos medical-grade stand



echonous.com

*The Kosmos Trio tool, AI FAST, and AI-Assisted EF workflow are released under the 'Enforcement Policy for Imaging Systems During the Coronavirus Disease 2019 (COVID-19) Public Health Emergency, Guidance for Industry and Food and Drug Administration Staff, April 2020' policy and have not been cleared by the FDA. These features are intended to be used by qualified healthcare professionals or under the supervision or in-person guidance of a trained or licensed healthcare professional.

*Not all features are available in all markets, please check with your local representative for availability in your region.

© 2015 to 2023 EchoNous, Inc., or its affiliates. All rights reserved. EchoNous, echonous.com, and the EchoNous logo are trademarks of EchoNous, Inc. or its affiliates. EchoNous, Inc. 8310 154th Ave. NE, Building B, Suite 200, Redmond, WA 98052. D010610_REV D