

## KOSMOS™ PLUS

The most powerful, versatile, affordable POCUS solution for clinicians everywhere.



Experience Kosmos Plus and unleash advanced POCUS capabilities at a fraction of the cost. With everything included — cutting-edge AI, advanced Doppler features, transducers, a 12.9-inch iPad Pro® and medical-grade stand — you'll have what you need to get started out of the box and ensure your equipment stays together when you need it. Enhance patient care, optimize your workflow, and elevate your clinical information.



### Configuration

Probes, 12.9 inch iPad® Pro, medical-grade stand, AI software and advanced features all included



### Durable

Probes designed for the point of care: survive 1 m drop, IP67 rated, and approved for all levels of cleaning and disinfection



### 5-Year Warranty

Industry leading 5-year warranty for all transducers



### Made in USA

Manufactured with excellence in Redmond, Washington, USA

# Kosmos Plus is designed for you:



Cardiology



Critical Care



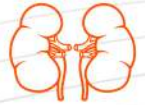
Emergency  
Medicine



Vascular  
Access



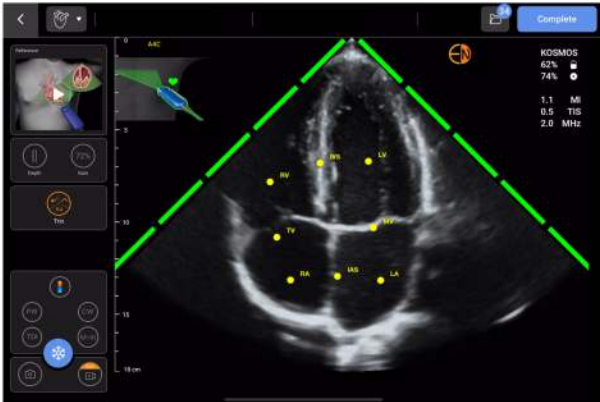
Primary  
Care



Nephrology

## AI + Doppler Features

Our intelligent POCUS solution on iOS provides AI-assisted workflows (Trio, AI FAST, AI-Assisted EF Workflow) and advanced Doppler imaging (PW, TDI, CW, Color Doppler, Color Power Doppler), to give you the clinical insights you need for every care scenario.



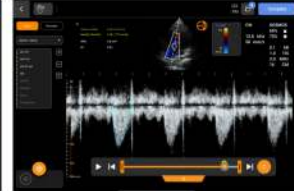
Trio: AI-driven Guidance, Grading, and Labeling of the cardiac structures



Pulsed Wave Doppler



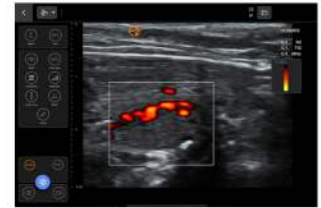
Tissue Doppler Imaging



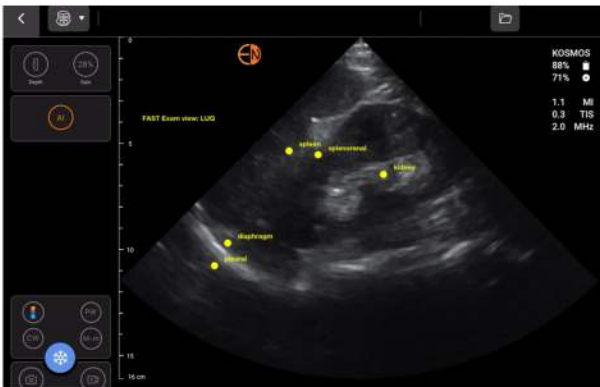
Continuous Wave Doppler



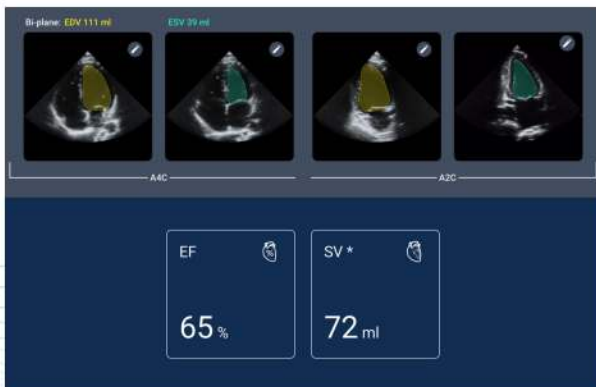
Color Doppler



Color Power Doppler



AI FAST: AI-driven anatomical labeling and view identification



AI-Assisted EF Workflow: AI-driven ejection fraction and stroke volume

## Kosmos Plus is designed for the Point-of-Care

For the first time, you'll have the capabilities you need for the most complicated cases balanced with the versatility, portability, and affordability of a handheld system.

### Stand

- Weight: 24.5 kg
- Dimensions: 112 x 51 x 45 cm

### Torso-One™

- Weight: 275 g
- Footprint: 20.7 mm x 16 mm
- 2D Frequency: 1.5-4.5 MHz
- Center Frequency: 3 MHz

### Lexsa™

- Weight: 280 g
- Footprint: 38 mm x 8 mm
- 2D Frequency: 4-11 MHz
- Center Frequency: 7.5 MHz



\*The Kosmos Trio tool, AI FAST, and AI-Assisted EF workflow are released under the 'Enforcement Policy for Imaging Systems During the Coronavirus Disease 2019 (COVID-19) Public Health Emergency, Guidance for Industry and Food and Drug Administration Staff, April 2020' policy and have not been cleared by the FDA. These features are intended to be used by qualified healthcare professionals or under the supervision or in-person guidance of a trained or licensed healthcare professional.

\* iPad Pro® are registered trademarks of Apple Inc.